

X-SERIES ON-HIGHWAY



REWARD YOURSELF

WITH A BOLD STATEMENT

The X-Series has expanded again, this time elevating the concept of what a premium on-highway truck should be. Introducing the 57X, the most advanced and most driver-focused on-highway truck we've ever built. Built on a history of toughness and filled with the technology, comfort and efficiency that rewards you every time you get behind the wheel and every time you check your bottom line.

PREMIUM FEATURES:

- A** LED projector beam headlights

B Integrated daytime running, marker, park and signal lamps

C Two-piece aerodynamic painted bumper with integrated air ducts

D Impact-resistant, aerodynamic lightweight molded resin hood with locking hood strut

E One-piece windshield with optional TufGlass impact-resistant windshield

F Stainless steel visor with LED marker lights

G Optimized drive wheel fairings and Flow Below wheel covers
- H** Large 31.5" x 22" sleeper windows

I 24-inch side extenders with black flexible ends

J Chassis side fairings with black flexible skirts

 - > Spacious integrated X-Series sleepers
 - > Best-in-class HVAC with cab and sleeper outlets
 - > Optional idle-free battery operated dual HVAC system
 - > Optional Premium and Extreme Climate insulation



DIGITAL DASH

The ergonomic dash with digital interface features an easy-to-read and customizable layout that gives you the data you need at a glance, with integrated steering wheel controls that let you change vehicle information and entertainment settings without your hands ever leaving the wheel.



72" Stratosphere High Roof

SLEEPER OPTIONS

The 57X offers a 60-inch Mid Roof, a 72-inch Mid Roof and a 72-inch Stratosphere High Roof sleeper to give every driver the space and amenities needed to relax and recharge.

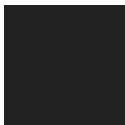
PREMIUM INTERIOR

Standard diamond-stitched leather interior, combined with ample insulation and sound-deadening materials create a welcoming environment that helps make every mile better. In the sleeper, our Drivers Lounge option gives you a spacious, quiet and comfortable space to catch up on paperwork, unwind and rest for the day ahead.

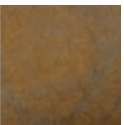
> Interior Options:



Quarry Grey



Charcoal Black



Timber Brown

(Available on Premium Package only)



DESIGNED TO MOVE YOU



ENGINES

- Detroit® DD13® Gen 5 370-525 HP, 1250-1850 lb-ft
- Detroit® DD15® Gen 5 425-505 HP, 1550-1850 lb-ft
- Detroit® DD16® 500-600 HP, 1850-2050 lb-ft
- Detroit® Integrated Powertrain Management



TRANSMISSIONS

- Detroit® DT12® Direct and Overdrive AMT

AXLES

- Detroit® Front: 12,000-14,700 lbs
- Detroit® Rear: Single: 21,000-23,000 lbs
- Detroit® Tandem: 40,000-46,000 lbs

DETROIT ASSURANCE SUITE OF SAFETY SYSTEMS

The 57X offers the entire Detroit Assurance® Suite of Safety Systems, the most advanced safety technology in the industry. The suite features a number of safety-improving technologies including:

- Active Brake Assist 5
- Adaptive Cruise Control to 0 MPH*
- Active Side Guard Assist
 - Brake Hold Mode
 - Intelligent High Beam
 - Traffic Sign Display
 - Active Speed Intervention
 - Optional Active Lane Assist with Lane Keep Assist, Auto Stop, Lane Departure Protection, and Steer Assist
 - Lane Departure Warning
 - Tailgate Warning
 - Automatic Headlights/Wipers
 - Forward-facing and driver-facing video capture (via Bendix Safety Direct)**

*Requires DT12 transmission

**Requires Safety Direct subscription

AERODYNAMICS

- 12-inch Day Cab and 24-inch sleeper side extenders with black flexible ends
- 72-inch and 60-inch Mid Roof aero roof fairing
- Day Cab aero roof fairing or adjustable aerodynamic deflector
- Chassis side fairings with black flexible skirts
- Optimized drive wheel fairings
- Flow Below mold-in color drive wheel covers

DETROIT CONNECT®

The 57X helps reduce costly repairs and improve uptime with Detroit Connect Virtual Technician® and the Detroit Connect portal, which together notify you of faults and their severity, help you plan maintenance and optimize vehicle and driver performance.



WESTERN STAR
WESTERNSTARTRUCKS.COM